

SUPERFLY

tail tidy - '22 up Chief

1 before you get started.

Grab your tools, you'll need them.

- *8mm allen wrench to remove the fender
- *putty knife or screwdriver to remove plastic plugs
- *3mm allen wrench (to remove the hardware that holds the stalk to the bottom of the subframe)

Plate/bracket hardware

- 4pcs - 6mm x 20mm (used to mount LP)
- 2pcs - 6mm x 10mm (used to mount lights)

LP hardware

license plate screws and nuts

2 disassembly



Take seat off

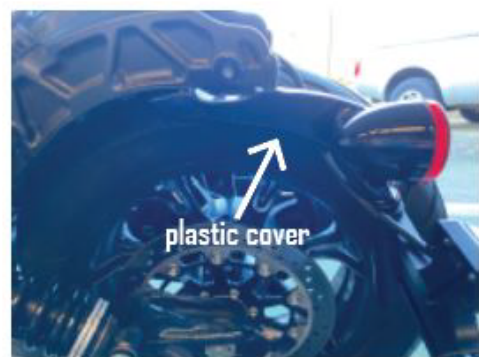
Remove the Fender

- 0) Remove seat
- 1) Remove the 2 bolts on each side of the fender [this will take force]
- 2) Lift the fender off; remove that pretty rear reflector on the underside

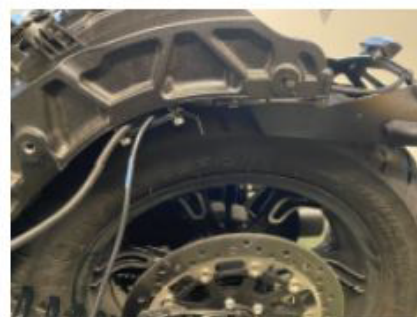
Remove turn signal assembly

1) looking up underneath the turn signals you will see a plastic cover. To remove it, you need to get underneath and pop off the caps using a screw driver or putty knife. Now pop off the cover.

2) With the cover off you have access to the 4 fasteners. Using the 3mm allen wrench, unscrew them. The turn signal assembly will come off. Disconnect the turn signal wires



3 installation



Preassembly using the 3mm allen wrench

- 1) attach the turn signals to the plate with the 6x10mm screws with the 3mm allen wrench
- attach license plate light
- attach license plate using the 3mm allen wrench

Assembly

- 1) attach the license plate holder to the underside of the subframe TIP: get the 4 screws started, then tighten
- 2) run the wires and attach the plug in the turn signals and the inline load regulators.
- 3) tidy everything up to your standards. (tuck the wires, zip tie, etc)
- 4) reassemble the fender and put on the seat.

ALL SET!

