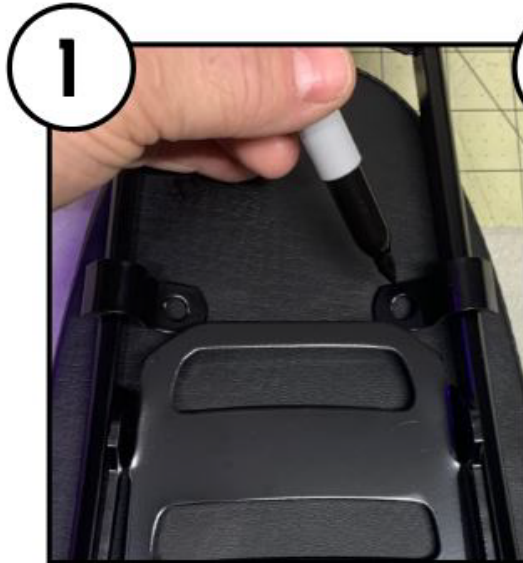


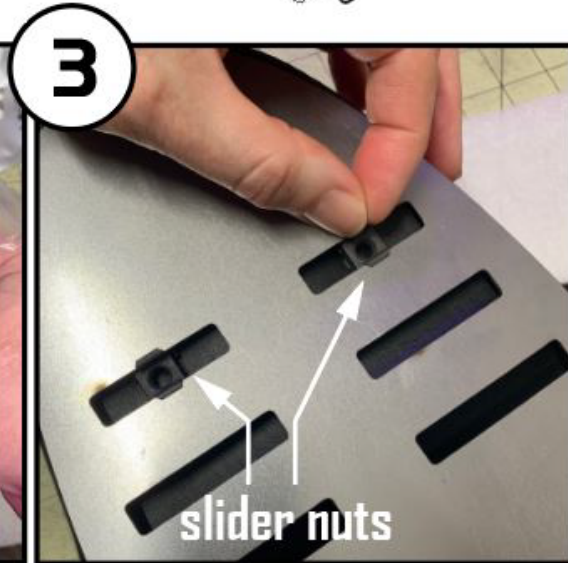
Installing your backrest



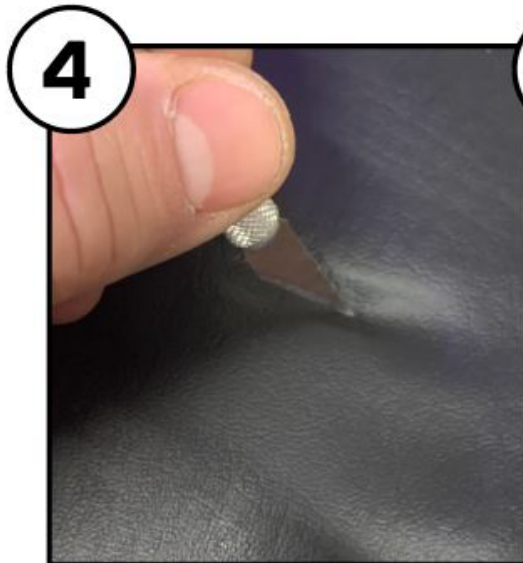
1 Line up the backrest where you would like it to be positioned on the sissy bar. Mark the holes.



2 Unzip the backrest and pull the metal plate out.



3 Install slider nuts to line up with the marks on your backrest. Slide the plate back into the backrest.



4 Use a sharp instrument to make the holes where you marked.



5 Place the half clamps over the holes, and reassemble